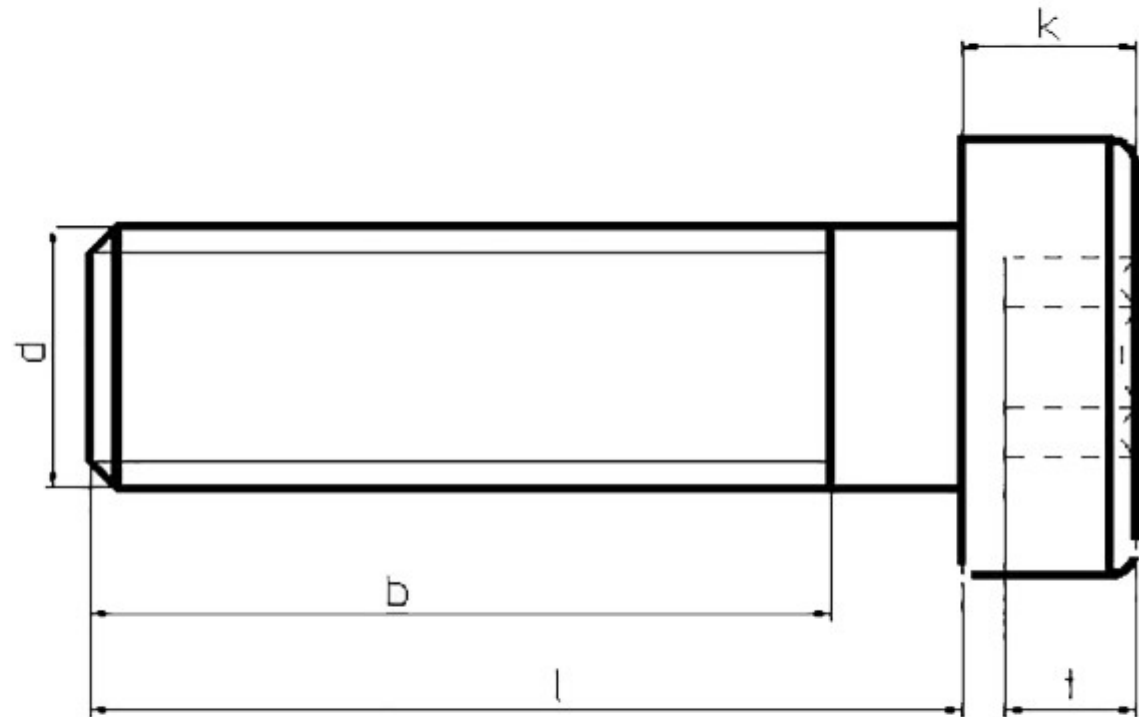
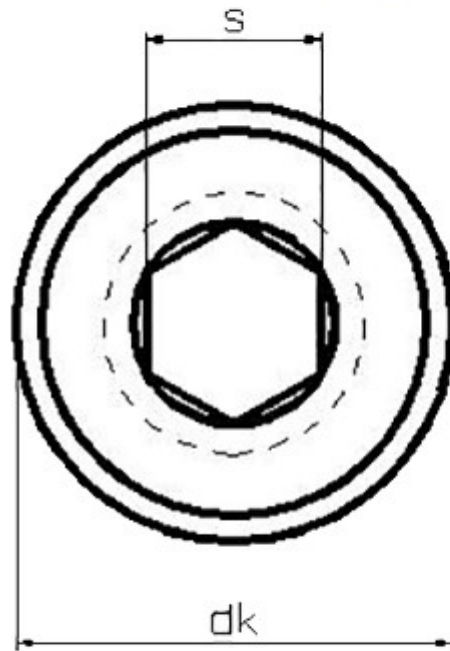




Ever Hardware Industrial Limited

DIN 7984



d	M3	M4	M5	M6	M8	M10	M12	M16	M20
dk	5.5	7.0	8.5	10.0	13.0	16.0	18.0	24.0	30.0
k	2.0	2.8	3.5	4.0	5.0	6.0	7.0	9.0	11.0
s	2.0	2.5	3.0	4.0	5.0	7.0	8.0	12.0	14.0
t	1.5	2.3	2.7	3.0	3.8	4.5	5.0	5.5	7.5
b	12	14	16	18	22	26	30	38	46