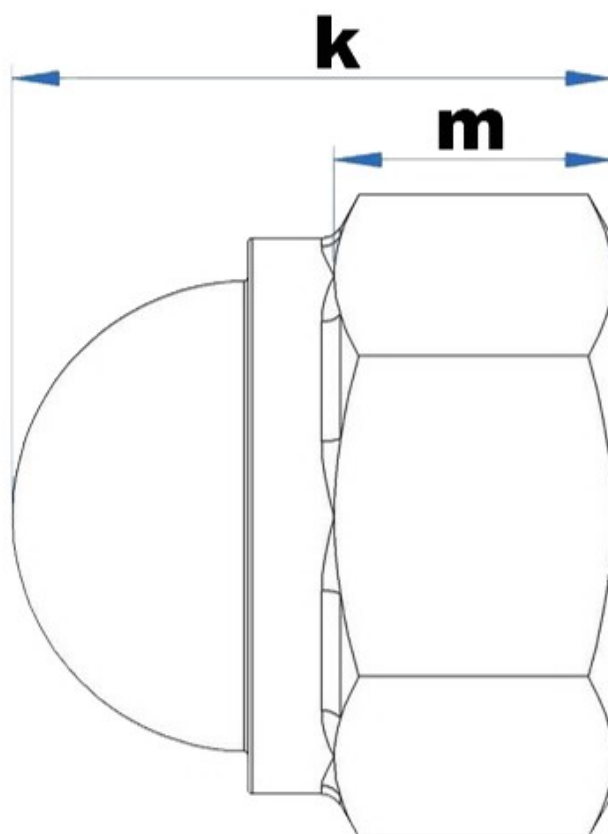
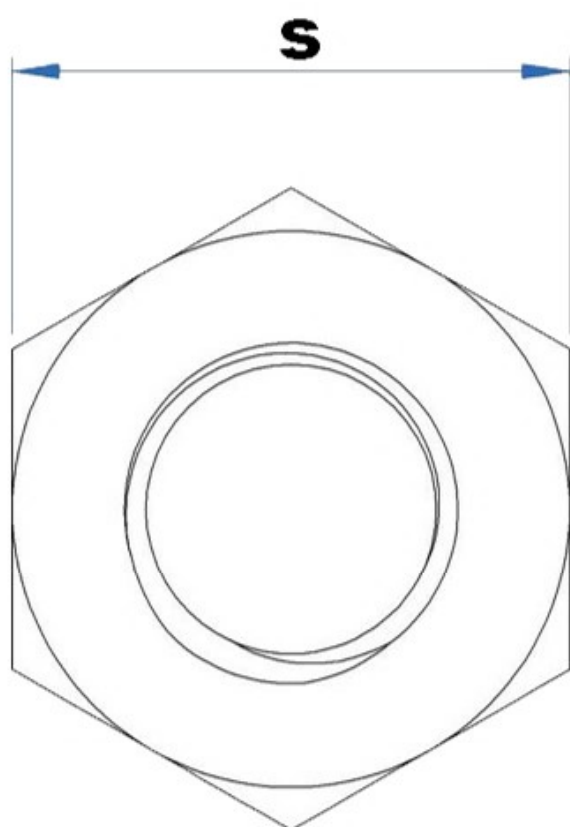


DIN 1587



d	M4	M5	M6	M8	M10	M12
p	0.7	0.8	1.0	1.0/1.25	1.0/1.25/1.5	1.25/1.5/1.75
m max	8	10	12	15	18	22
m min A	7.64	9.64	11.57	14.57	17.57	21.48
m min B	7.42	9.64	11.57	14.57	17.57	21.48
s max	7	8	10	13	16/17	18/19
s min A	6.78	7.78	9.78	12.73	15.73/16.73	17.73/18.67
s min B	6.64	7.64	9.64	12.57	15.57/16.57	17.57/18.48
d	M14	M16	M18	M20	M22	M24
p	1.5/2.0	1.5/2.0	1.5/2.0/2.5	1.5/2.0/2.5	1.5/2.0/2.5	2.0/3.0
m max	25	28	32	34	39	42
m min A	24.48	27.48	31.38	33.38	38.38	41.38
m min B	24.48	27.48	31.38	33.38	38.38	41.38
s max	21/22	24	27	30	32/34	36
s min A	20.67/21.67	23.67	26.67	29.67	31.61/33.38	35.38
s min B	20.16/21.16	23.16	26.16	29.16	31/33	35