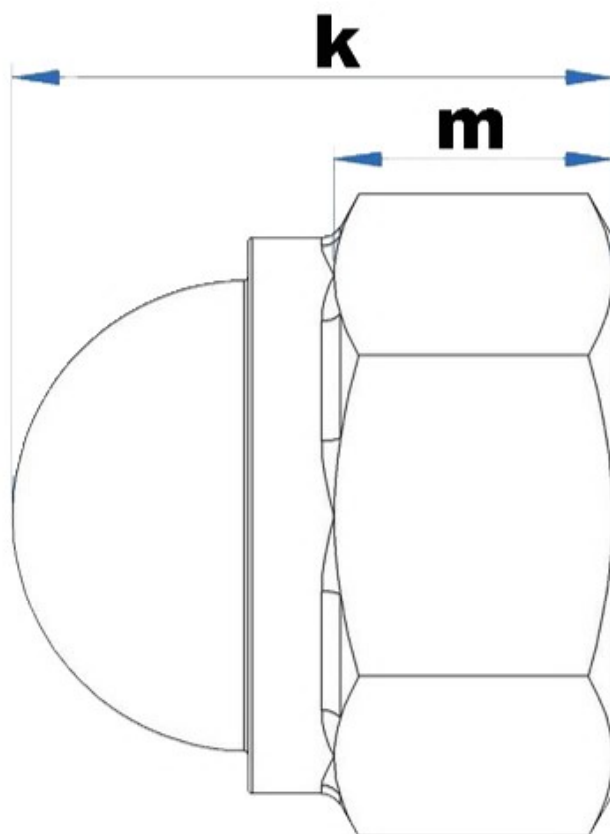
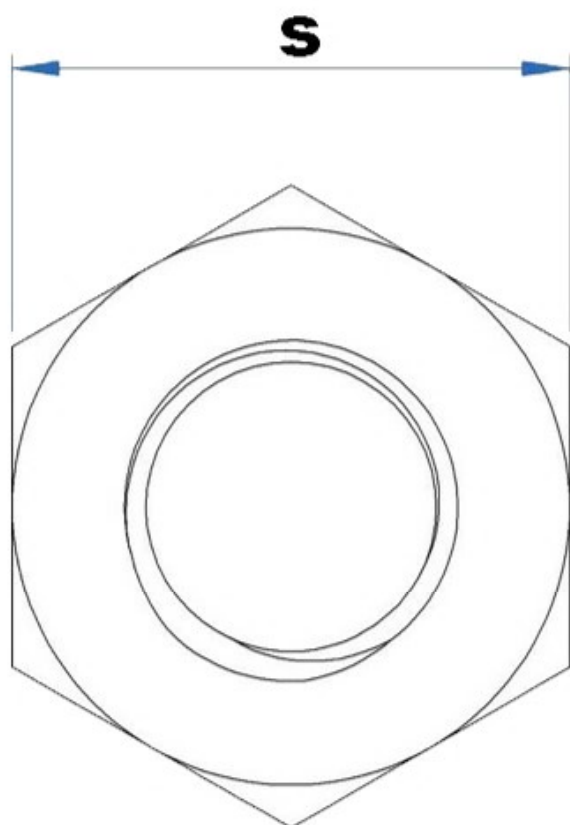


DIN 986



d	M4	M5	M6	M8	M10
p	0.7	0.8	1.0	1.0/1.25	1.0/1.25/1.5
k max	9.9	10.85	12.35	14.35	18.5
k min	9.3	10.15	11.65	13.65	17.7
s max	7	8	10	13	16/17
s min	6.78	7.78	9.78	12.73	15.73/16.73
EH EVER HARDWARE					
d	M12	M14	M16	M20	
p	1.25/1.5/1.75	1.5/2.0	1.5/2.0	1.5/2.0/2.5	
k max	22.9	26.8	27.9	35.5	
k min	22.1	26	27.1	34.5	
s max	18/19	21/22	24	30	
s min	17.73/18.67	20.67/21.67	23.67	29.16	