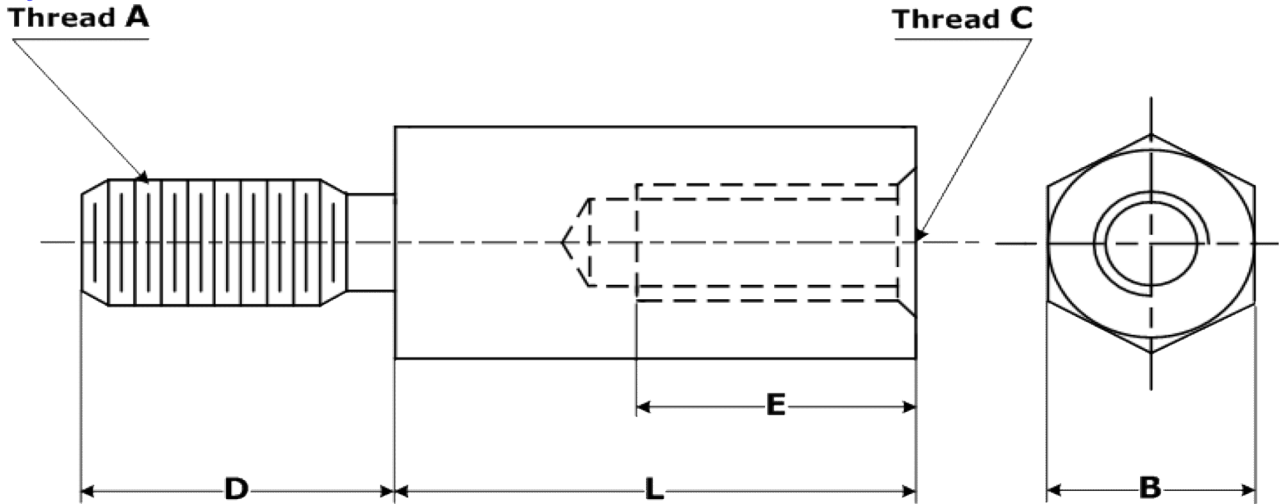


Nylon Standoff  
Thread A



Size	L	Thread A/C	E	D	B	Material	Size	L	Thread A/C	E	D	B	Material
M2*5+5	5	M2-0.4	4	5	4	PA66	M3*5+6	5	M3-0.5	4	6	5.6	PA66
M2*6+5	6	M2-0.4	5	5	4	PA66	M3*6+6	6	M3-0.5	5	6	5.6	PA66
M2*8+5	8	M2-0.4	5	5	4	PA66	M3*7+6	7	M3-0.5	6	6	5.6	PA66
M2*10+5	10	M2-0.4	5	5	4	PA66	M3*8+6	8	M3-0.5	6	6	5.6	PA66
M2*12+5	12	M2-0.4	5	5	4	PA66	M3*9+6	9	M3-0.5	6	6	5.6	PA66
M2*15+5	15	M2-0.4	5	5	4	PA66	M3*10+6	10	M3-0.5	6	6	5.6	PA66
M2*18+5	18	M2-0.4	5	5	4	PA66	M3*11+6	11	M3-0.5	6	6	5.6	PA66
M2*20+5	20	M2-0.4	5	5	4	PA66	M3*12+6	12	M3-0.5	6	6	5.6	PA66
M2*22+5	22	M2-0.4	5	5	4	PA66	M3*15+6	15	M3-0.5	6	6	5.6	PA66
M2*25+5	25	M2-0.4	5	5	4	PA66	M3*16+6	16	M3-0.5	6	6	5.6	PA66
M2*30+5	30	M2-0.4	5	5	4	PA66	M3*18+6	18	M3-0.5	6	6	5.6	PA66
M2*5+6	5	M2-0.4	4	6	4	PA66	M3*20+6	20	M3-0.5	6	6	5.6	PA66
M2*6+6	6	M2-0.4	5	6	4	PA66	M3*22+6	22	M3-0.5	6	6	5.6	PA66
M2*8+6	8	M2-0.4	6	6	4	PA66	M3*25+6	25	M3-0.5	6	6	5.6	PA66
M2*10+6	10	M2-0.4	6	6	4	PA66	M3*30+6	30	M3-0.5	6	6	5.6	PA66
M2*12+6	12	M2-0.4	6	6	4	PA66	M3*35+6	35	M3-0.5	6	6	5.6	PA66
M2*15+6	15	M2-0.4	6	6	4	PA66	M3*40+6	40	M3-0.5	6	6	5.6	PA66
M2*18+6	18	M2-0.4	6	6	4	PA66	M3*45+6	45	M3-0.5	6	6	5.6	PA66
M2*20+6	20	M2-0.4	6	6	4	PA66	M4*5+6	5	M4-0.7	4	6	7	PA66
M2*25+6	25	M2-0.4	6	6	4	PA66	M4*6+6	6	M4-0.7	5	6	7	PA66
M2.5*5+6	5	M2.5-0.45	4	6	4.7	PA66	M4*7+6	7	M4-0.7	6	6	7	PA66
M2.5*6+6	6	M2.5-0.45	5	6	4.7	PA66	M4*8+6	8	M4-0.7	6	6	7	PA66
M2.5*8+6	8	M2.5-0.45	6	6	4.7	PA66	M4*9+6	9	M4-0.7	6	6	7	PA66
M2.5*10+6	10	M2.5-0.45	6	6	4.7	PA66	M4*10+6	10	M4-0.7	6	6	7	PA66
M2.5*12+6	12	M2.5-0.45	6	6	4.7	PA66	M4*11+6	11	M4-0.7	6	6	7	PA66
M2.5*15+6	15	M2.5-0.45	6	6	4.7	PA66	M4*12+6	12	M4-0.7	6	6	7	PA66
M2.5*18+6	18	M2.5-0.45	6	6	4.7	PA66	M4*13+6	13	M4-0.7	6	6	7	PA66
M2.5*20+6	20	M2.5-0.45	6	6	4.7	PA66	M4*15+6	15	M4-0.7	6	6	7	PA66
M2.5*22+6	22	M2.5-0.45	6	6	4.7	PA66	M4*18+6	18	M4-0.7	6	6	7	PA66
M2.5*25+6	25	M2.5-0.45	6	6	4.7	PA66	M4*20+6	20	M4-0.7	6	6	7	PA66
M2.5*30+6	30	M2.5-0.45	6	6	4.7	PA66	M4*22+6	22	M4-0.7	6	6	7	PA66
							M4*25+6	25	M4-0.7	6	6	7	PA66
							M4*30+6	30	M4-0.7	6	6	7	PA66
							M4*35+6	35	M4-0.7	6	6	7	PA66
							M4*40+6	40	M4-0.7	6	6	7	PA66
							M4*45+6	45	M4-0.7	6	6	7	PA66
							M4*50+6	50	M4-0.7	6	6	7	PA66