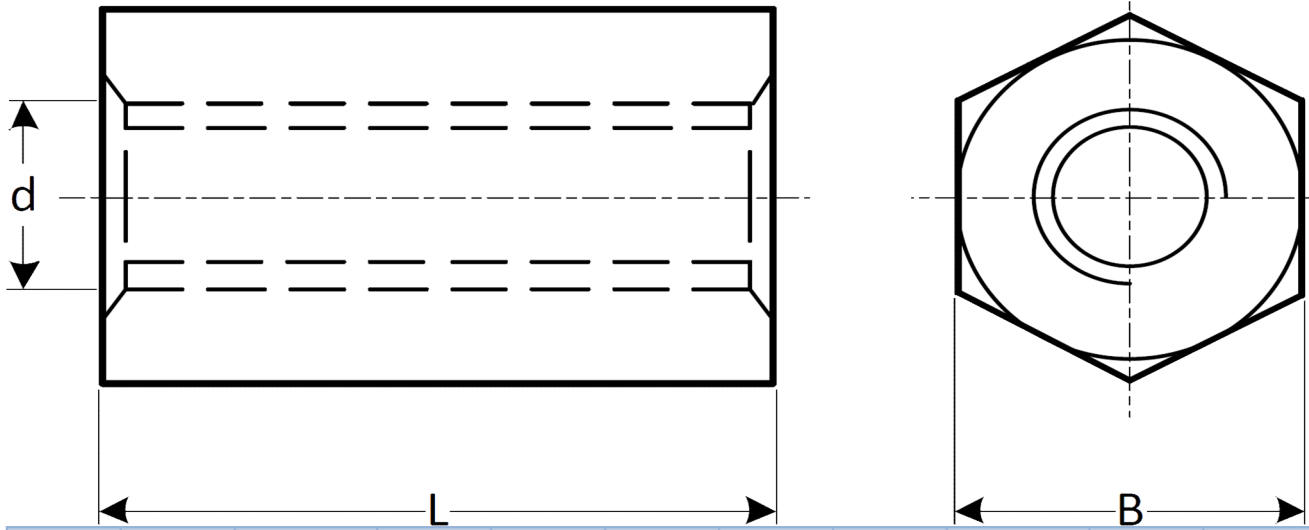




# Ever Hardware Industrial Limited

## Nylon Spacer



Size	L	Thread d	B	Material	Size	L	Thread d	B	Material
M2*5	5	M2-0.4	4	PA66	M3*30	30	M3-0.5	5.5	PA66
M2*6	6	M2-0.4	4	PA66	M3*35	35	M3-0.5	5.5	PA66
M2*8	8	M2-0.4	4	PA66	M3*40	40	M3-0.5	5.5	PA66
M2*10	10	M2-0.4	4	PA66	M3*45	45	M3-0.5	5.5	PA66
M2*12	12	M2-0.4	4	PA66	M3*50	50	M3-0.5	5.5	PA66
M2*15	15	M2-0.4	4	PA66	M4*5	5	M4-0.7	7	PA66
M2*18	18	M2-0.4	4	PA66	M4*6	6	M4-0.7	7	PA66
M2*20	20	M2-0.4	4	PA66	M4*8	8	M4-0.7	7	PA66
M2*22	22	M2-0.4	4	PA66	M4*10	10	M4-0.7	7	PA66
M2*25	25	M2-0.4	4	PA66	M4*12	12	M4-0.7	7	PA66
M2*30	30	M2-0.4	4	PA66	M4*15	15	M4-0.7	7	PA66
M2.5*5	5	M2.5-0.45	4.7	PA66	M4*18	18	M4-0.7	7	PA66
M2.5*6	6	M2.5-0.45	4.7	PA66	M4*20	20	M4-0.7	7	PA66
M2.5*8	8	M2.5-0.45	4.7	PA66	M4*22	22	M4-0.7	7	PA66
M2.5*10	10	M2.5-0.45	4.7	PA66	M4*25	25	M4-0.7	7	PA66
M2.5*12	12	M2.5-0.45	4.7	PA66	M4*30	30	M4-0.7	7	PA66
M2.5*15	15	M2.5-0.45	4.7	PA66	M4*35	35	M4-0.7	7	PA66
M2.5*18	18	M2.5-0.45	4.7	PA66	M4*40	40	M4-0.7	7	PA66
M2.5*20	20	M2.5-0.45	4.7	PA66	M4*45	45	M4-0.7	7	PA66
M2.5*22	22	M2.5-0.45	4.7	PA66	M4*50	50	M4-0.7	7	PA66
M2.5*25	25	M2.5-0.45	4.7	PA66	M5*10	10	M5-0.8	8	PA66
M2.5*30	30	M2.5-0.45	4.7	PA66	M5*15	15	M5-0.8	8	PA66
M3*5	5	M3-0.5	5.5	PA66	M5*20	20	M5-0.8	8	PA66
M3*6	6	M3-0.5	5.5	PA66	M5*25	25	M5-0.8	8	PA66
M3*8	8	M3-0.5	5.5	PA66	M5*30	30	M5-0.8	8	PA66
M3*10	10	M3-0.5	5.5	PA66	M5*35	35	M5-0.8	8	PA66
M3*12	12	M3-0.5	5.5	PA66	M5*40	40	M5-0.8	8	PA66
M3*15	15	M3-0.5	5.5	PA66	M5*45	45	M5-0.8	8	PA66
M3*18	18	M3-0.5	5.5	PA66	M5*50	50	M5-0.8	8	PA66
M3*20	20	M3-0.5	5.5	PA66					
M3*22	22	M3-0.5	5.5	PA66					
M3*25	25	M3-0.5	5.5	PA66					